

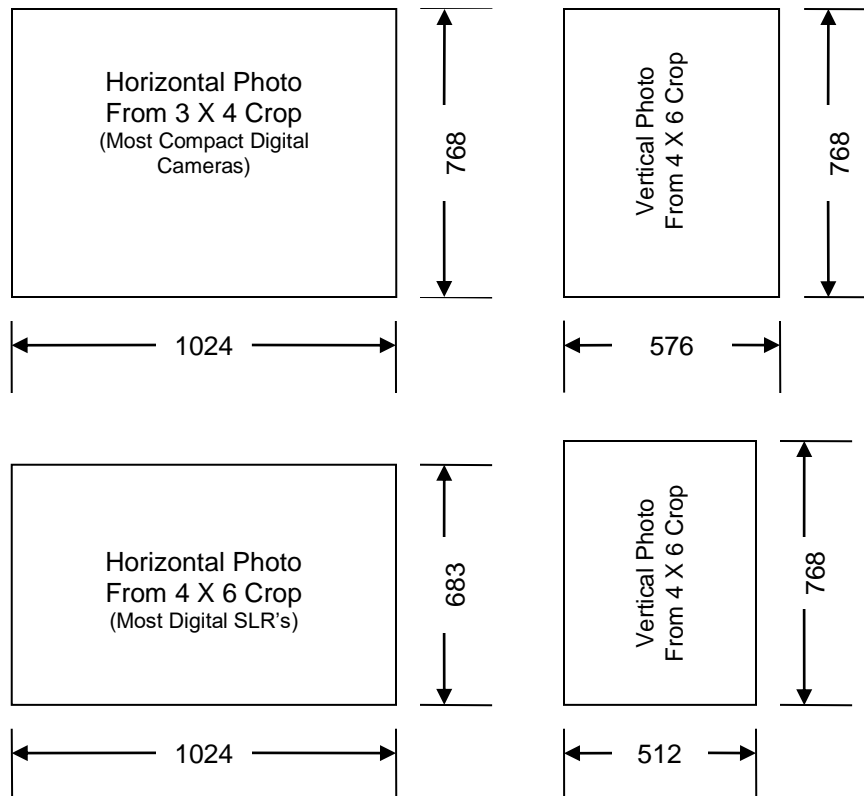
Preparing Photos for the EMCC Competitions

PRINTS

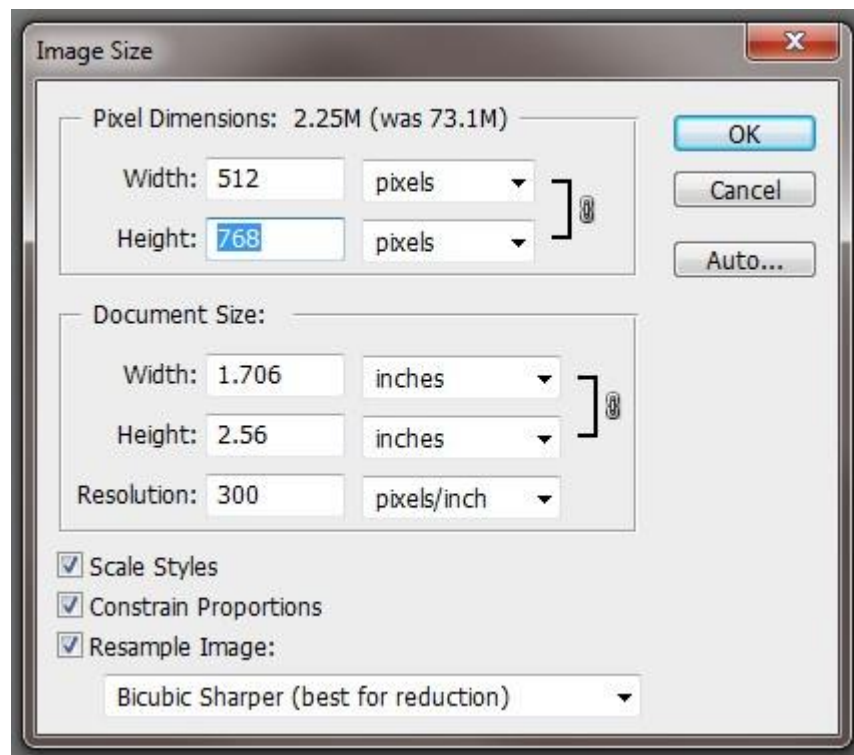
1. All prints must be mounted and/or matted. No frames! The **name** of the photographer must appear on the **top of the back** of the print. An ID number for each print will be given to the photographer prior to the competition and must be written in the **upper left corner** on the **back** of the print. No writing should appear on the front of the print or mat.
2. The minimum size for prints (the photograph, not the mount) is 5X7 inches. The maximum size is 16 X 20 inches including the mat, if any. Panoramic images must also conform to the maximum long dimension of 20 inches.

DIGITAL PROJECTION

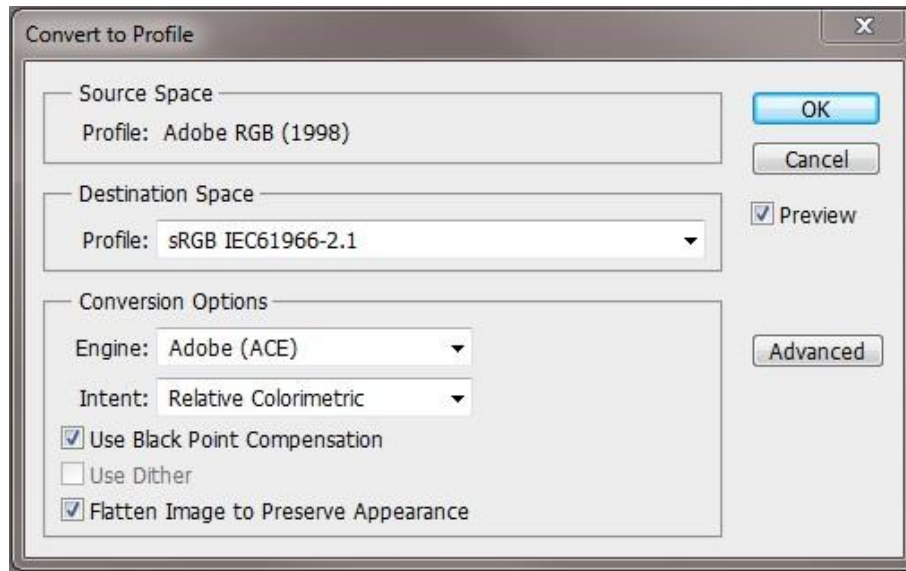
1. Size must be set to a maximum width of 1024 pixels **and/or** a maximum height of 768 pixels. This may vary, depending on how it is cropped, as long as you don't exceed the maximums. See the following illustration for examples:



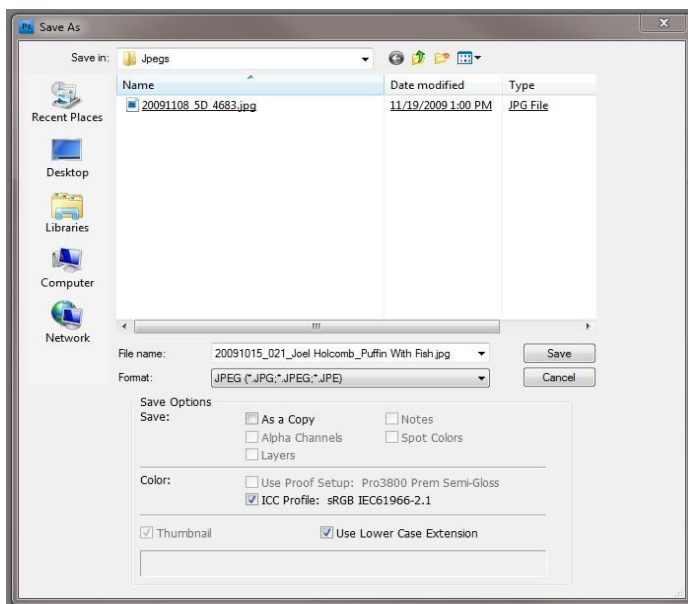
2. Following is a step by step procedure to resize an image for digital projection in Photoshop (See example screen shots on following pages):
 - 2.1. In the Image menu, select Image Size...
 - 2.2. DPI doesn't matter at all, unless you are making a print, so just ignore it for digital projection.
 - 2.3. Leave the Constrain Proportions and Resample Image boxes checked (Scale Styles doesn't matter either in this case).
 - 2.4. If you have the choice, under Resample Image, choose "Bicubic Sharper" as the resample type, assuming you are reducing the file size. If bicubic sharper is not there, just select Bicubic.
 - 2.5. **For a vertical image**, in the "Pixel Dimensions" area, enter **768** for the **Height**. The width will automatically scale to the proper width (because you selected Constrain Proportions earlier).
 - 2.6. **For a horizontal image**, in the "Pixel Dimensions" area, enter **1024** for the **Width**--the height will scale automatically, but watch out that it doesn't go above 768. This can happen if you've cropped the image to something less than a 4/3 ratio. If this happens, just go back and enter 768 for the height, and everything should be fine.
 - 2.7. Click OK.
 - 2.8. Here is an example of the dialog box for a vertical image:



- All photos submitted *should* be in the sRGB color space. If you don't know what this means, you probably don't have to worry about it, as most cameras default to sRGB, and most photo editing software programs assume you are using sRGB. To check which color space your photo is currently in, open the image in Photoshop and go to the Edit/Convert to Profile... menu option. If the "Source Space" is already shown as sRGB, click Cancel. If the source space is anything else, select sRGB in the "Destination Space" drop-down menu and click OK. Just accept the defaults on the "Conversion Options."



- All photos submitted must be in JPEG format (.jpg file extension). You should save them at a high quality level of 8 or 9. Jpeg quality is usually presented as an option when you save the file.
- Save the file. Now that all projected photos are uploaded on the EMCC website, file names are not critical, so you can name it whatever you want. However, please do not use ANY punctuation marks in the file name other than dashes (-) or underscores (_) to avoid issues with your computer or the website seeing it as an invalid file name.



- Click "Save," then select the Image Quality and click OK.

